

RAW

 **ideas**[®]

WINTER
COLLECTION'25

CRINKLE
Velvet

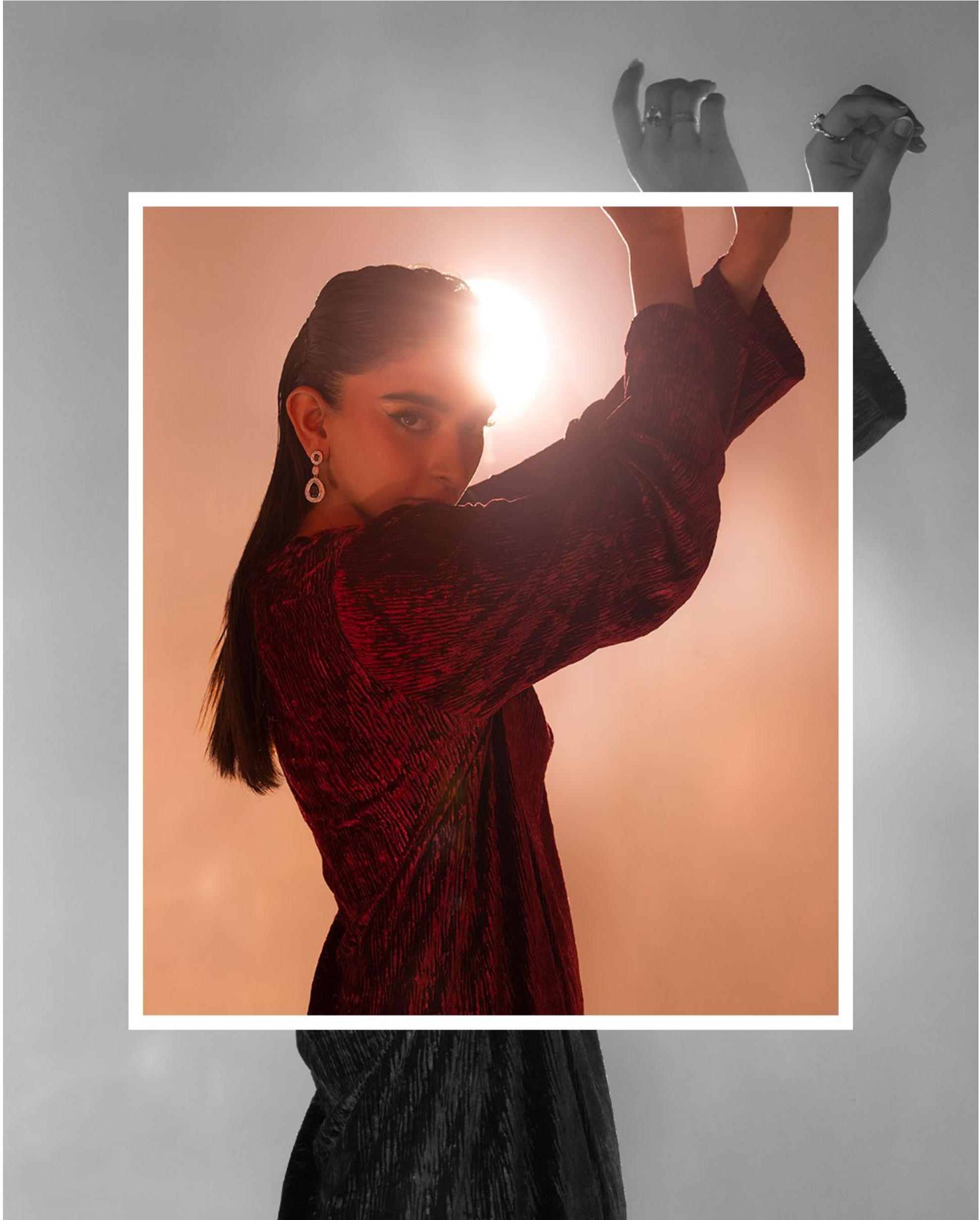




 **Ideas®**

Indulge in the effortless luxury of ***Crinkle Velvet*** — a collection designed to bring depth, movement and modern charm to winter dressing. With its soft sheen, fluid drape and rich surface textures, each outfit blends comfort with elevated glamour. Thoughtful details, refined silhouettes and plush fabrics come together to create looks that feel warm, confident and beautifully refined for the season.





IPST-55164

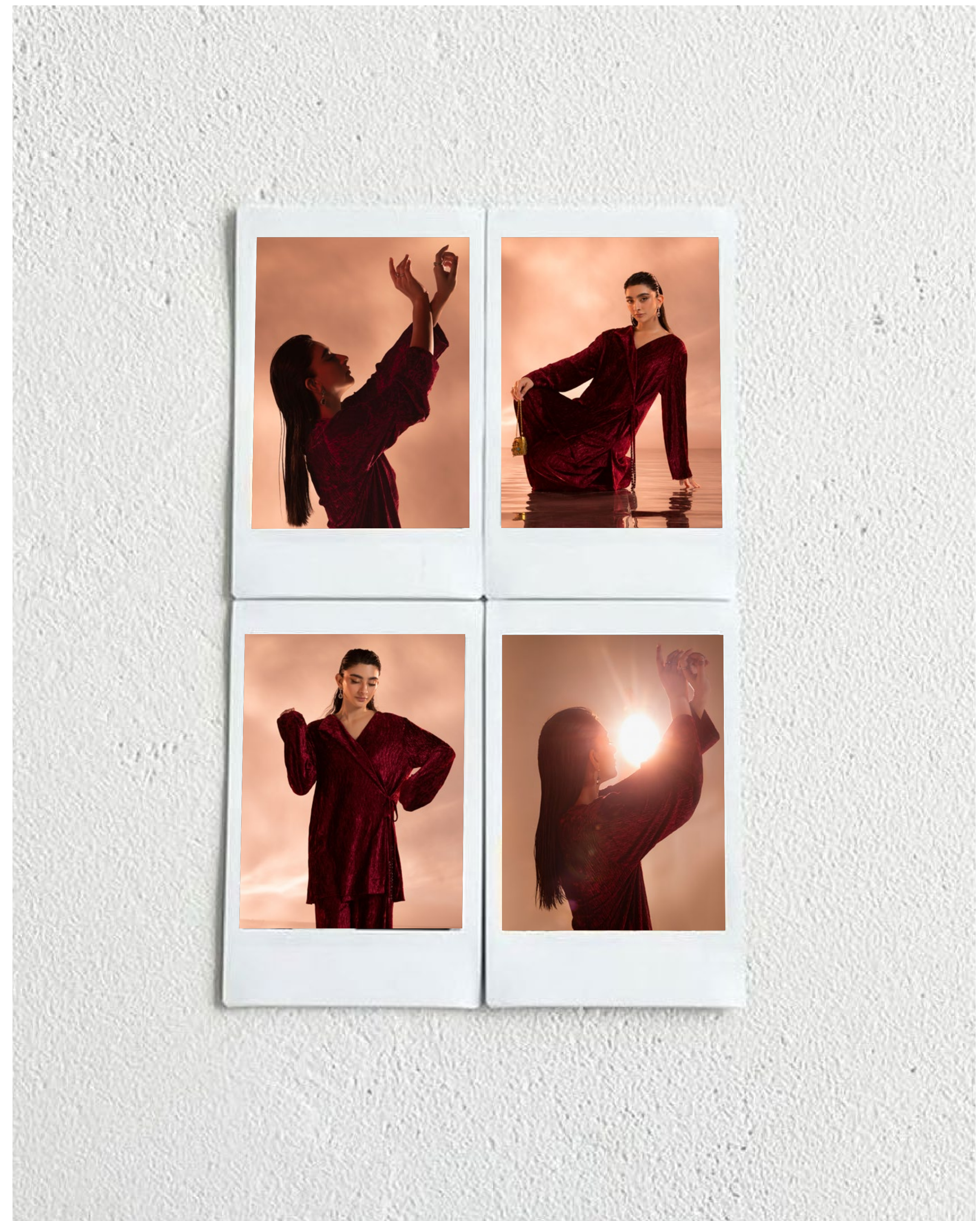
VELVINA

A rich pink co-ord set designed for easy winter warmth, offering soft crinkle velvet that moves with you through long days. The regular fit with an angrakha style silhouette that keeps the look chic yet traditional, perfect for party wear or cozy evenings. Featuring a delicately embellished drawstring, that adds functional adjustability with a subtle festive charm.

GULAHMEDSHOP.COM

IPST-55164





VELVET

Muse







This co-ord set in a vibrant blue tone, keeps the winter chill at bay while staying modern. Its loose-fit silhouette keeps the outfit relaxed, offering space for easy layering. The neckline's subtle embellishment introduces a feminine sparkle that stays functional and modest throughout the day.

IPST-55162



Draped in Soft LUXURY

Deep green tones pair with crinkle velvet to form a warm winter companion. The roomy silhouette lets you stay comfortable through long hours of wear, ideal for cozy winter evenings. Featuring a clean, minimal design, that keeps the outfit modern while still rooted in traditional charm.

IPST-55165



IPST-55165



FASHION



With the sparkling grey palette and plush crinkle velvet, it delivers gentle comfort through chilly days while looking chic through the day. Featuring a cowl-style neckline, that brings a contemporary twist while adding warmth around the neck. While the loose fit stays airy yet modest, keeping it suitable for both home gatherings and errands.

IPST-55161





Crafted for the Velvet s e a s o n

IPST-55161



Soft velvet in deep purple with a contemporary crinkle texture, that drapes comfortably, making it a reliable winter pick for long festive hours. The roomy cut and a gathered waist-line design lets you move freely while staying wrapped in gentle warmth. Its band-collar neckline maintains a clean, traditional look with a modern polish.

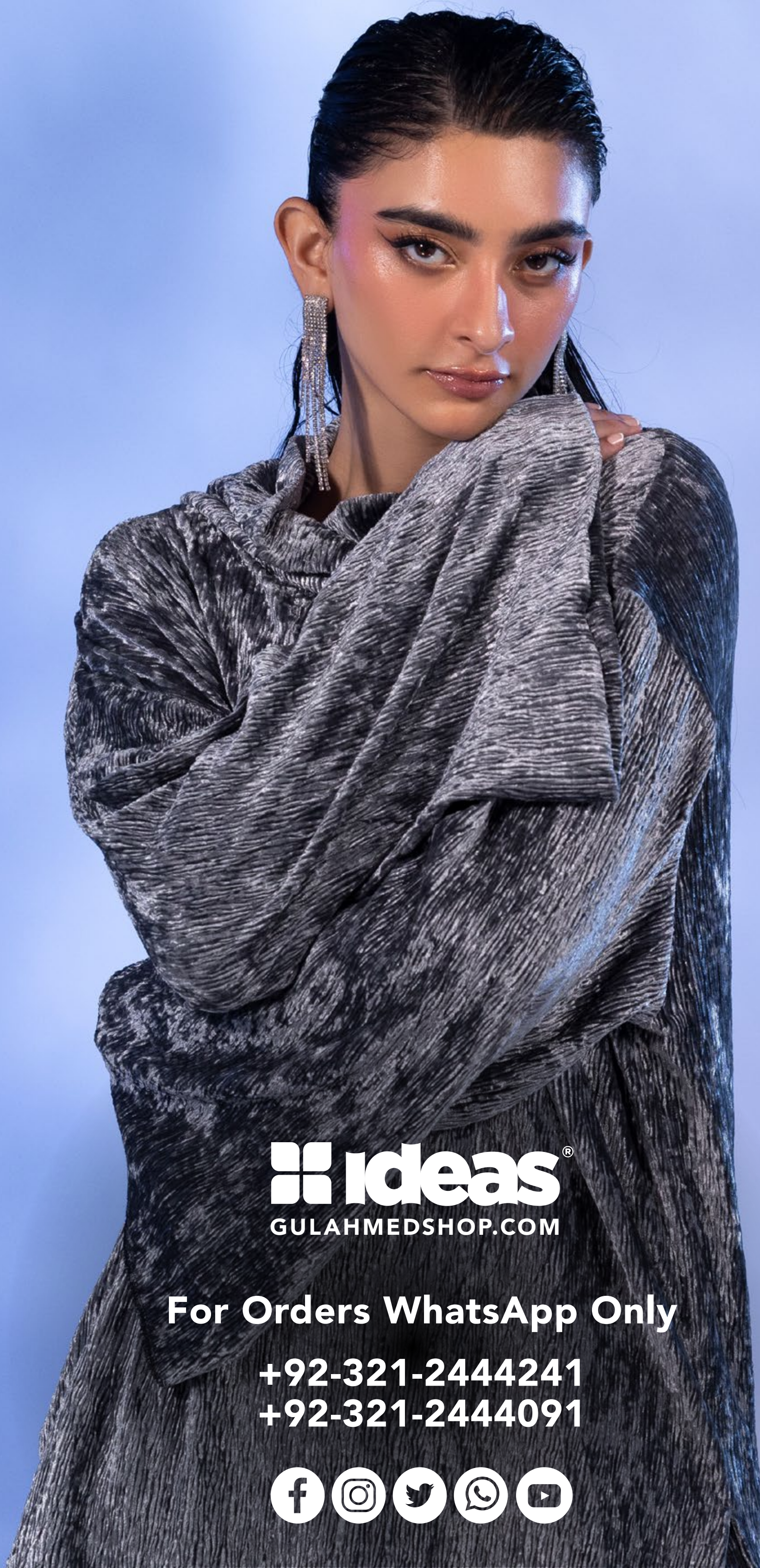
IPST-55163



Stories woven in Velvet







 **Ideas**[®]
GULAHMEDSHOP.COM

For Orders WhatsApp Only

+92-321-2444241
+92-321-2444091

